

2023 DEMOGRAPHICS
3 Mile | 5 Miles | 10 Miles



Population

7,166 | 27,854 | 50,761



Daytime Population

7,369 | 25,396 | 41,722



Median Household Income

\$57,802 | \$46,604 | \$50,090

RETAIL FOR SALE

60 Niemann Lane | Murphysboro, Illinois 62966

7,000 SF on 0.84 Acre | Sale Price: \$750,000

PROPERTY DETAILS

Freestanding former Aaron's Rent to Own

Great visibility along primary retail corridor

Just 4.5 miles from Southern Illinois University Carbondale

Shared access with Murphysboro's Walmart

Highway 13 - 12,000 VPD

Carl Day

314.495.4816

cday@paceproperties.com

Lauren Berry

314.785.7632

lberry@paceproperties.com

Scott Seyfried

314.785.7647

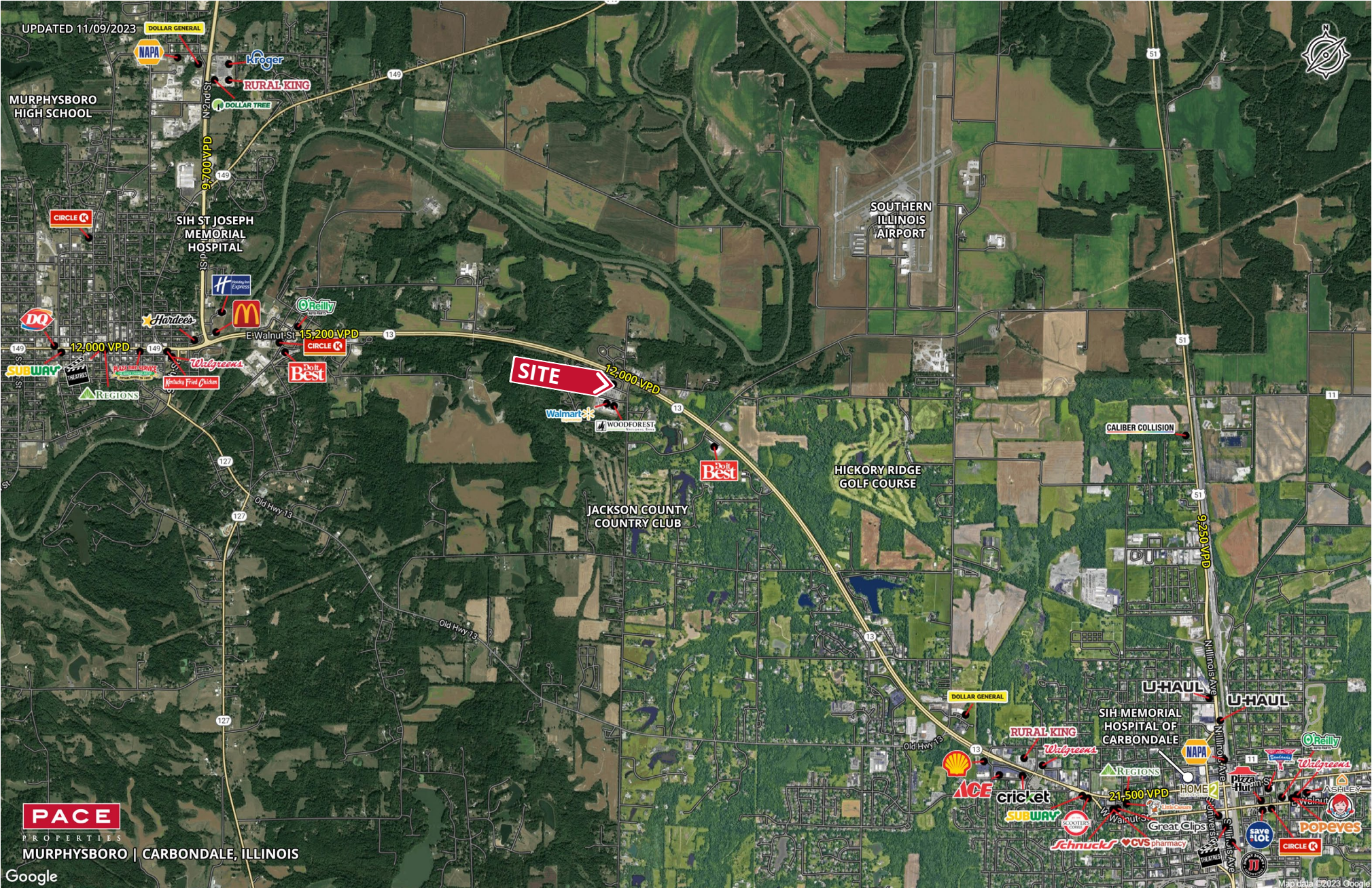
sseyfried@paceproperties.com

[PACEPROPERTIES.COM](https://www.paceproperties.com) | 314.968.9898

1401 South Brentwood Boulevard, Suite 900 | St. Louis, Missouri 63144

The information contained herein is not warranted, although it has been obtained from the owner/landlord of the subject property or from other sources that Pace Properties, Inc. deems reliable, and is subject to change without notice. Owner/landlord and Pace Properties, Inc. make no representations as to the environmental condition of the subject property and recommend tenant's independent investigation.

Trade Area Aerial



PACEPROPERTIES.COM | 314.968.9898

1401 South Brentwood Boulevard, Suite 900 | St. Louis, Missouri 63144

The information contained herein is not warranted, although it has been obtained from the owner/landlord of the subject property or from other sources that Pace Properties, Inc. deems reliable, and is subject to change without notice. Owner/landlord and Pace Properties, Inc. make no representations as to the environmental condition of the subject property and recommend tenant's independent investigation.

